



City of Longview

1525 Broadway
Longview, WA 98632
www.ci.longview.wa.us

Agenda

Complete Streets Advisory Committee

Tuesday, January 27, 2026

5:00 PM

Training Room, 2nd Floor, City Hall

1. **HYBRID MEETING DETAILS**

26-0070 Please click the link to join the webinar: <https://us02web.zoom.us/j/83084726483>
Webinar ID: 830 8472 6483
Or by telephone: (253) 205-0468; (253) 215-8782

2. **CALL TO ORDER**

3. **ROLL CALL**

4. **APPROVAL OF MINUTES**

26-0071 MINUTES FROM OCTOBER 25, 2025.
NOVEMBER AND DECEMBER MEETINGS WERE CANCELLED.

5. **PROJECT UPDATES**

26-0072

- SYSTEMIC PEDESTRIAN CROSSING IMPROVEMENTS

6. **OTHER BUSINESS**

26-0073 PROPOSED 2026 SCHEDULE

7. **BOARD MEMBER COMMENTS**

8. **PUBLIC COMMENTS**

9. **ADJOURNMENT**



Minutes

Complete Streets Advisory Committee

Tuesday, October 28, 2025

5:00 PM

Training Room, 2nd Floor, City Hall

1. HYBRID MEETING DETAILS

25-00985 Please click the link to join the webinar: <https://us02web.zoom.us/j/83084726483>
Webinar ID: 830 8472 6483
Or by telephone: (253) 205-0468; (253) 215-8782

2. CALL TO ORDER

The meeting was called to order at 5:01 pm.

3. ROLL CALL

*Present: Morgan Palmer, Chair; Clark Carroll; Trey Davis; George Hudson; Pat (John) Keating; Ivy Masters; Councilmember Ruth Kendall, Council Liaison
Unexcused: Art Birkmeyer;
Staff: Sam Barham, City Engineer; Nancy Vandehey, Admin
Guests: Andrew Hillger*

4. APPROVAL OF MINUTES

25-00986 **MINUTES FROM JULY 22, 2025.
MEETINGS ON AUGUST 26TH AND SEPTEMBER 23RD WERE CANCELLED.**
The minutes were approved as presented. This passed unanimously.

5. PUBLIC COMMENTS

6. UNFINISHED BUSINESS

7. NEW BUSINESS

8. REPORTS

25-00987 **PROJECT UPDATES:**

- **SYSTEMIC PEDESTRIAN CROSSING IMPROVEMENTS**

- **STREET ART WITH THE DOWNTOWN ADVISORY COMMITTEE AND DOWNTOWNERS**

Morgan Palmer reminded the board of the previous discussion on three intersections on Nichols (17th, 23rd, Florida) that the board had decided not to proceed with any alterations. He would like to discuss another location at Garfield/Hemlock/Harding and Nichols that he would like to reach out to the funding source to see if they would allow the funding to be utilized for this intersection. Several variations were discussed about this challenging non-traditional intersection. It was suggested that an additional street light be added to the Harding side.

Ivy Masters made a motion, seconded by Clark Carroll, to pull the data to propose a reallocation of the monies from the other 3 intersections (17th, 23rd, and Florida) to the (Garfield, Hemlock/Harding) intersection. This passed unanimously.

Morgan Palmer shared an update on the proposal from Broader Strokes to paint the streets in the Downtown area. The counter proposal is painting the non-drivable portions of the side of a street. No crosswalks or intersections would be allowed as they are too distracting for drivers.

Morgan shared an update on the changes to Maple Street by LCC. The proposal for angle parking was taken to Council in October and has already been implemented with the support of LCC as their bigger lot is currently under construction.

9. **BOARD MEMBER COMMENTS**

The inconsistency of parking (angled, traditional) and the number of driving lanes of 14th Ave from Maple to Tennant Way. And 12th might be the same.

There was a question about the safety of signals vs stop signs.

At 15th & Florida the light is very short on the side street. Also the two credit unions on Commerce have a lot of ped traffic between them and maybe midblock lights would be nice on the crosswalk.

Washington Way & Nichols by church the light stays green when the light going your direction is yellow/red.

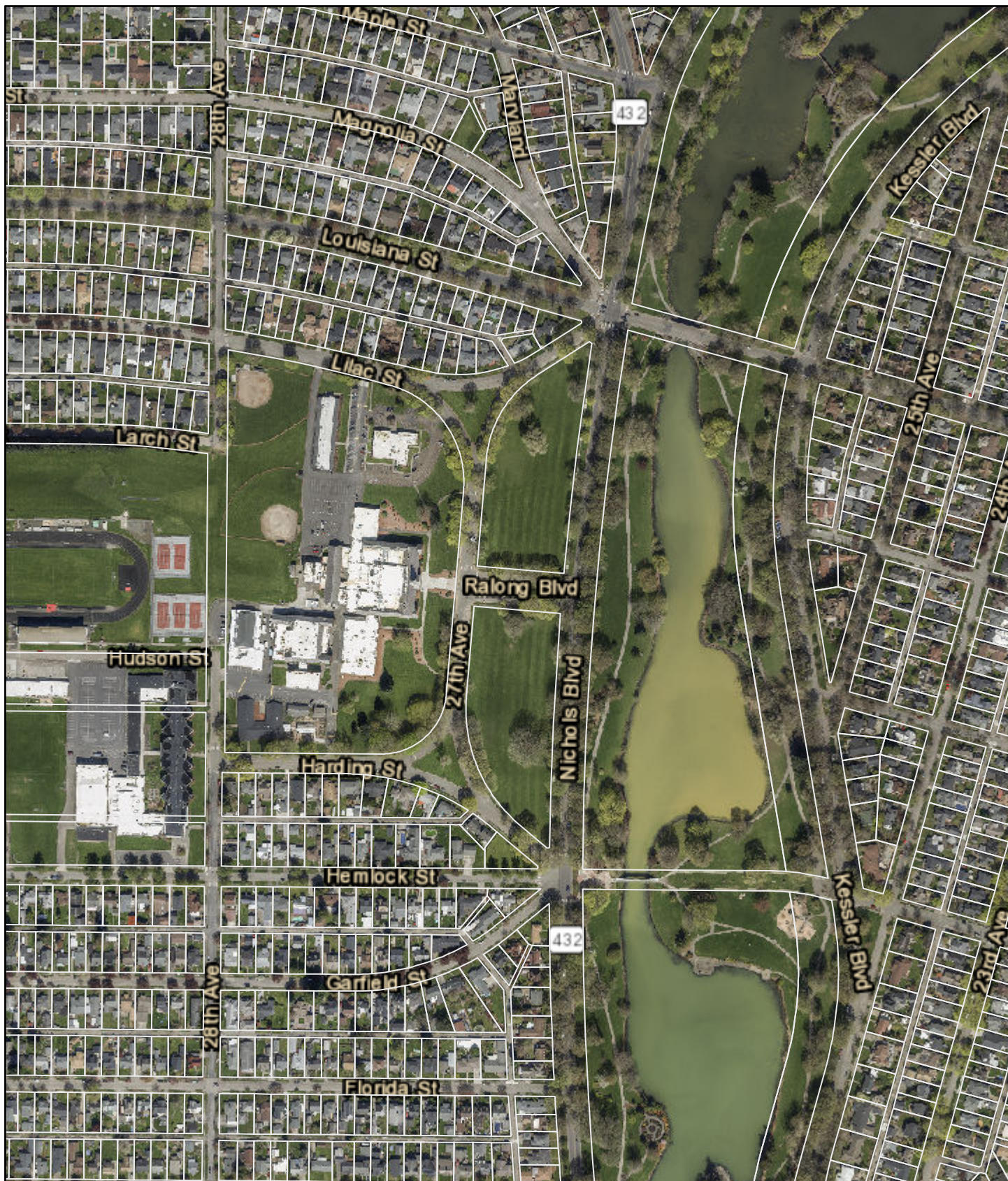
10. **EDUCATION TOPIC**

11. **ADJOURNMENT**

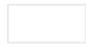

Due to the holidays, we will not be meeting in November and December. Morgan will be working on the Nichols proposal to WSDOT and may email information out if needed.

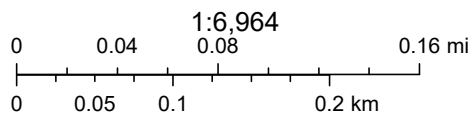
The meeting adjourned at 5:58 pm.

City of Longview



1/22/2026, 4:48:53 PM

-  Parcels
-  Longview City Boundary
- World_Transportation
- Citations

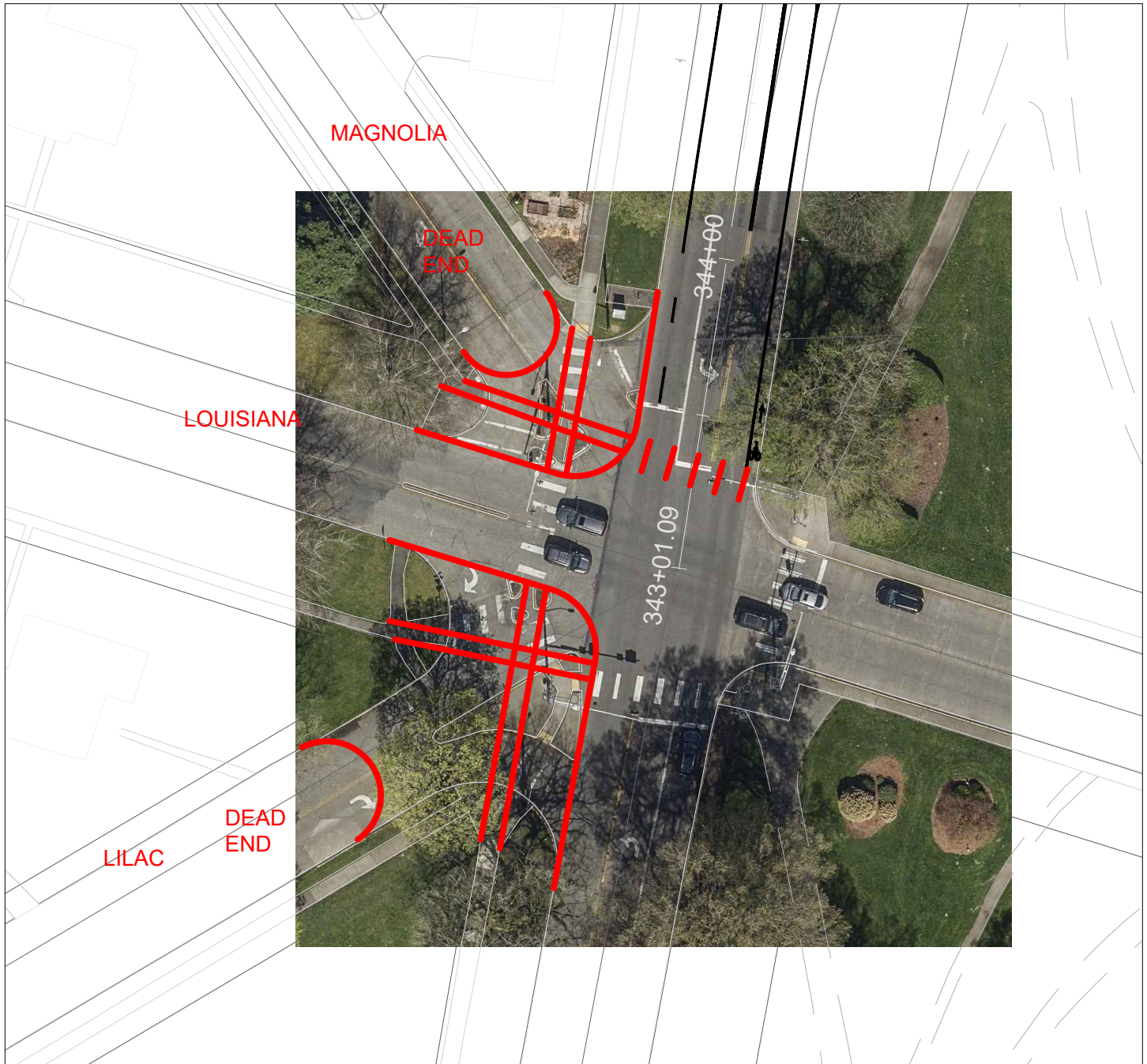


Esri, HERE, Garmin, (c) OpenStreetMap contributors, Source: Esri, Vantor, Earthstar Geographics, and the GIS User Community, Sources: Esri, HERE, Garmin, Intermap, increment P Corp., GEBCO, USGS, FAO, NPS, NRCAN, GeoBase, IGN, Kadaster NL, Ordnance Survey, Esri Japan, METI, Esri China (Hong Kong), (c) OpenStreetMap contributors, and the GIS User Community,

CONCEPT SKETCH

Systemic Pedestrian Crossing Improvement Project

Nichols Blvd at Louisiana Street - Option 1: Detour Lilac and Magnolia



Changes:

1. Extend curb on SW and NW corners to shorten crossing distance for pedestrians.
2. Add crosswalk north side of Louisiana.
3. Detour access to Lilac or Magnolia via neighborhood and RA Long Blvd. Impacts to school.
4. Potential impacts to drainage, TBD based on survey.

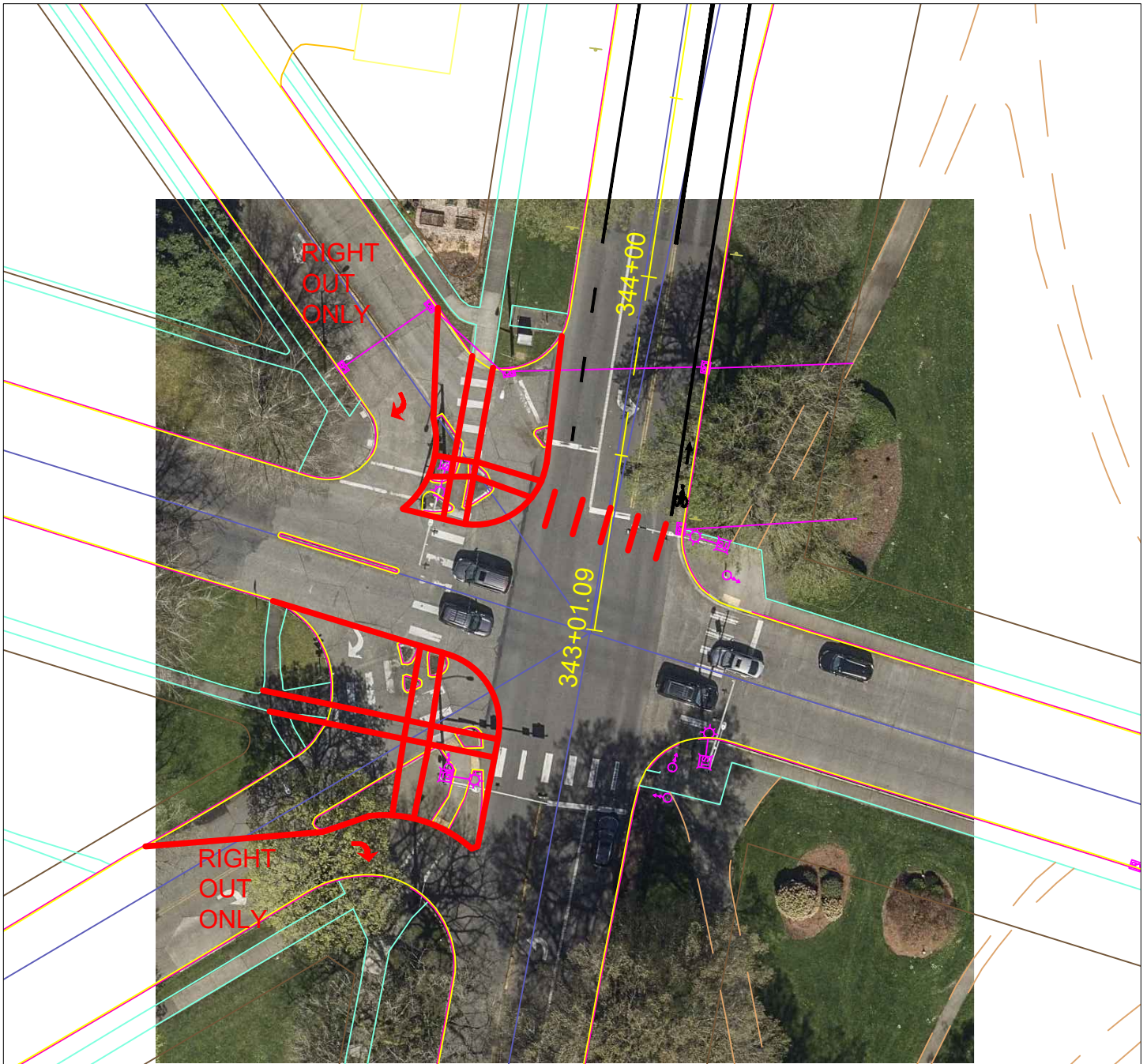
DRAWN BY MORGAN PALMER, P.E.
PLOTTED 1/22/2026 4:41 PM

\\Ci.longview.wa.us\city folders\Public
Works\Engineers\PROJECTS_ACTIVE PROJECTS\Systemic
Pedestrian Crossing Improvements\03 Design\3
Plans\CAD\Concept_Louisiana_no-entrance.dwg

CONCEPT SKETCH

Systemic Pedestrian Crossing Improvement Project

Nichols Blvd at Louisiana Street - Option 2: Right-Out only



Changes:

1. Allow right turns out of the neighborhood only.
2. Extend curb to increase safety and comfort of pedestrian islands.
3. Add crosswalk north side of Louisiana.
4. Potential storm impacts, TBD with survey.

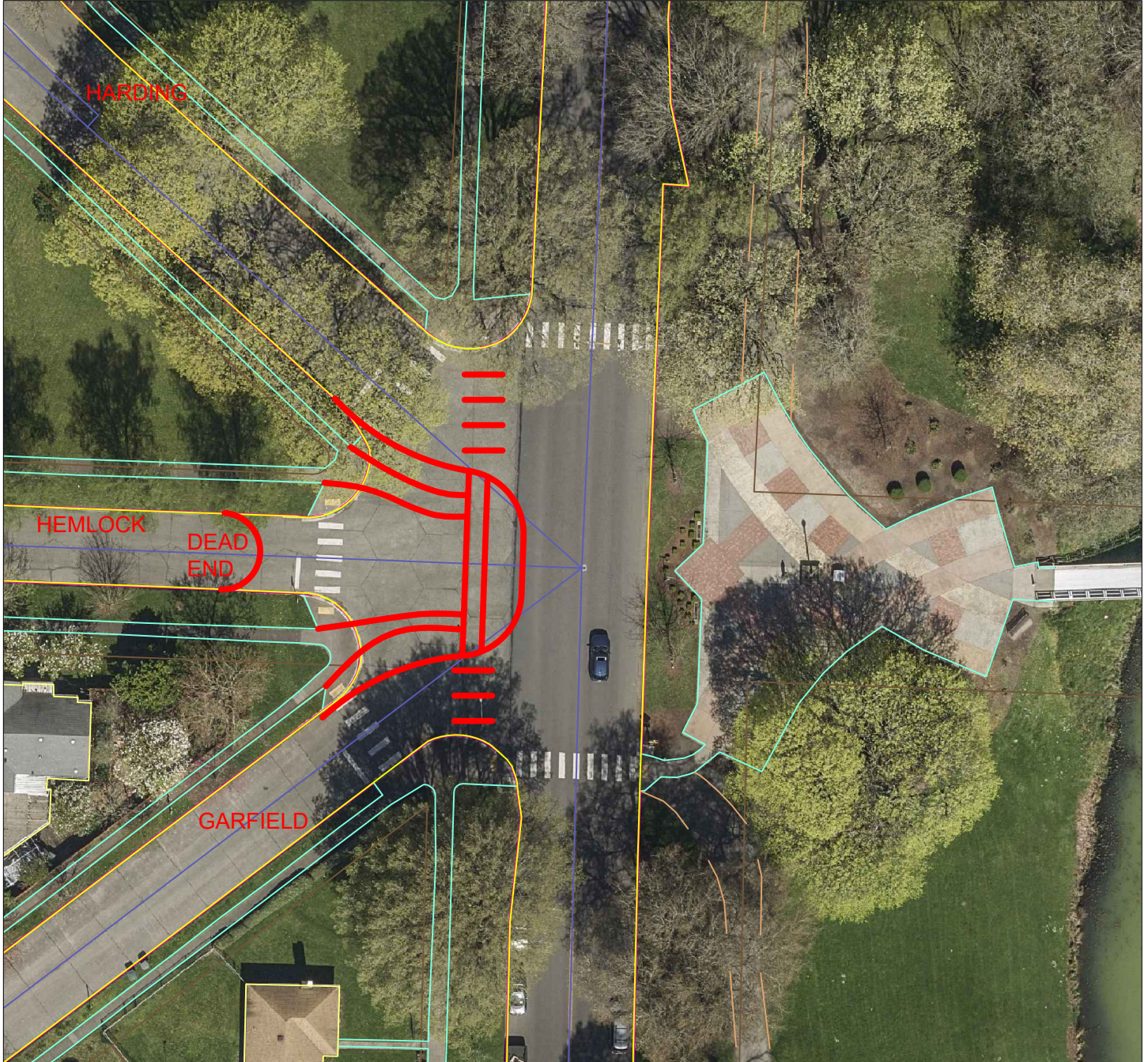
DRAWN BY MORGAN PALMER, P.E.
PLOTTED 1/22/2026 4:37 PM

\\Ci.longview.wa.us\city folders\Public
Works\Engineers\PROJECTS_ACTIVE PROJECTS\Systemic
Pedestrian Crossing Improvements\03 Design\3
Plans\CAD\Concept_Louisiana_right-out.dwg

CONCEPT SKETCH

Systemic Pedestrian Crossing Improvement Project

Nichols Blvd at Hemlock/Garfield/Harding: Option 1



Changes:

1. Detour access to Hemlock.
2. Shorten crossing distance on west side of Nichols and align cars perpendicular.
3. Add curb extension to consolidate turns at Harding and Garfield.
4. Potential impacts to drainage, TBD based on survey.

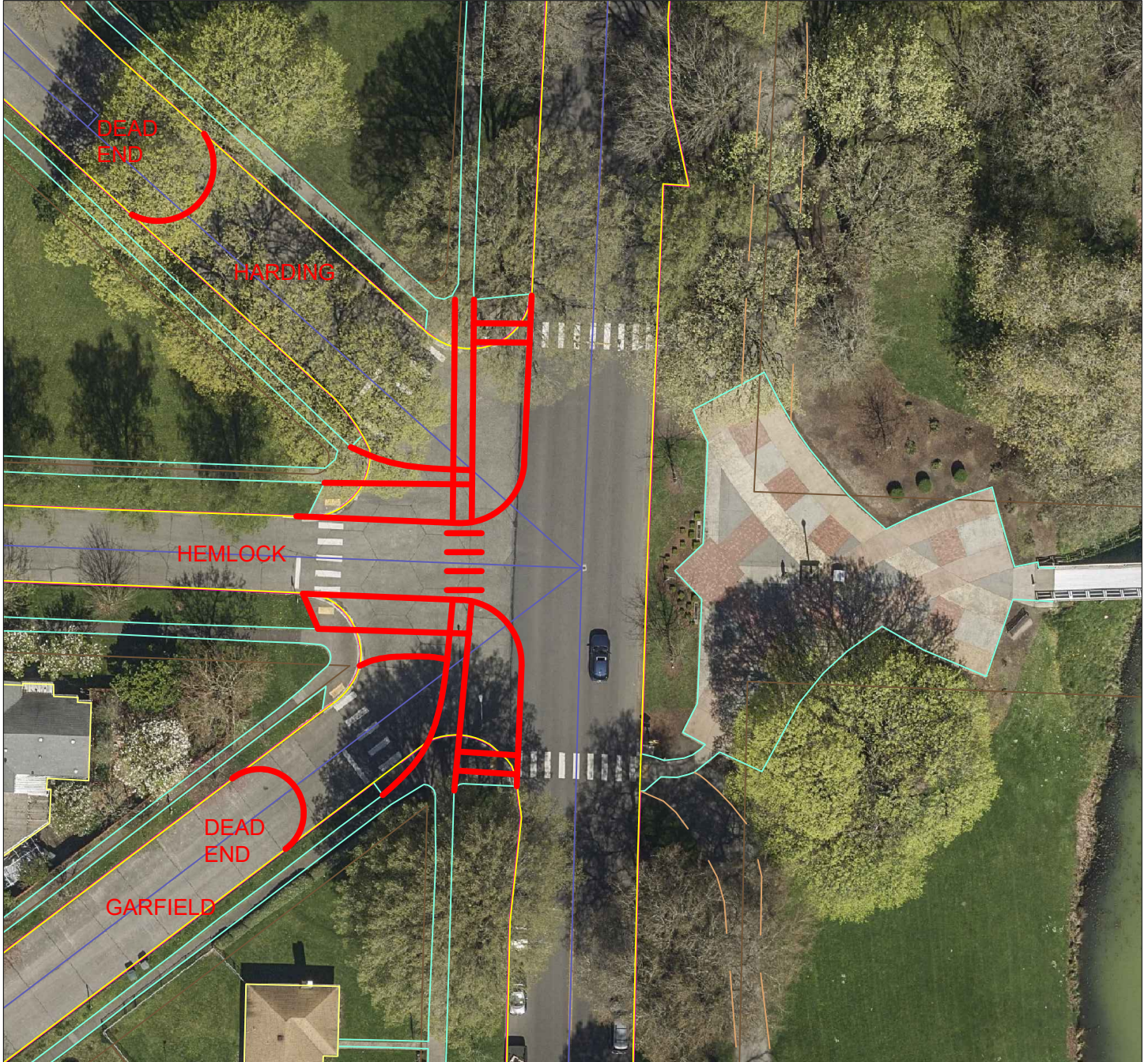
DRAWN BY MORGAN PALMER, P.E.
PLOTTED 1/22/2026 4:38 PM

\\Ci.longview.wa.us\city folders\Public
Works\Engineers\PROJECTS_ACTIVE PROJECTS\Systemic
Pedestrian Crossing Improvements\03 Design\3
Plans\CAD\Concept_Hemlock_1.dwg

CONCEPT SKETCH

Systemic Pedestrian Crossing Improvement Project

Nichols Blvd at Hemlock/Garfield/Harding: Option 2



Changes:

1. Detour access to Harding and Garfield.
2. Add curb extension to bring Hemlock intersection out and shorten crossing distance.
3. Potential impacts to drainage, TBD based on survey.