



City of Longview

1525 Broadway
Longview, WA 98632
www.ci.longview.wa.us

Agenda

Complete Streets Advisory Committee

Tuesday, March 24, 2026

5:00 PM

Training Room, 2nd Floor, City Hall

1. **HYBRID MEETING DETAILS**

26-00257 Please click the link to join the webinar: <https://us02web.zoom.us/j/83084726483>
Webinar ID: 830 8472 6483
Or by telephone: (253) 205-0468; (253) 215-8782

2. **CALL TO ORDER**

3. **ROLL CALL**

4. **APPROVAL OF MINUTES**

26-00258 MINUTES FROM JANUARY 27, 2026

5. **PROJECT UPDATES**

26-00259 SYSTEMIC PEDESTRIAN CROSSING IMPROVEMENTS

6. **OTHER BUSINESS**

7. **BOARD MEMBER COMMENTS**

8. **PUBLIC COMMENTS**

9. **ADJOURNMENT**



Minutes

Complete Streets Advisory Committee

Tuesday, January 27, 2026

5:00 PM

Training Room, 2nd Floor, City Hall

1. HYBRID MEETING DETAILS

26-0070 Please click the link to join the webinar: <https://us02web.zoom.us/j/83084726483>
Webinar ID: 830 8472 6483
Or by telephone: (253) 205-0468; (253) 215-8782

2. CALL TO ORDER

The meeting was called to order at 5:00 pm.

3. ROLL CALL

*Present: Morgan Palmer, Chair; Art Birkmeyer; Clark Carroll; Andrew Hillger; Pat (John) Keating; Ivy Masters;
Excused: George Hudson
Not present: Councilmember Ruth Kendall, Council Liaison
Staff: Nancy Vandehey*

4. APPROVAL OF MINUTES

26-0071 **MINUTES FROM OCTOBER 25, 2025.
NOVEMBER AND DECEMBER MEETINGS WERE CANCELLED.**
The minutes were approved as presented. This passed unanimously.

5. PROJECT UPDATES

26-0072

• **SYSTEMIC PEDESTRIAN CROSSING IMPROVEMENTS**

*Morgan Palmer reached out and spoke with WSDOT on moving forward with including the Harding, Hemlock, Garfield streets off Nichols Blvd into the scope of the Systemic project. He shared possible options for modifying intersections. The consensus was that we should start by knowing the amount of traffic and the peaks of the day.
He did the same for Louisiana and Nichols. Lilac may need to be left open for school/bus traffic.
There was a request to make the light brighter at the intersection of Harding, Hemlock, Garfield streets off Nichols Blvd.*

6. OTHER BUSINESS

26-0073 PROPOSED 2026 SCHEDULE

The consensus was to go with the proposed odd month schedule and give Morgan the option of canceling or holding as needed on even months.

7. BOARD MEMBER COMMENTS

Art Birkmeyer suggested connecting bike lanes on Olympia Way, Washington Way and Hudson and suggested 18th Ave.

He suggested a roundabout at the intersection of any of the lights on Hudson east of Commerce.

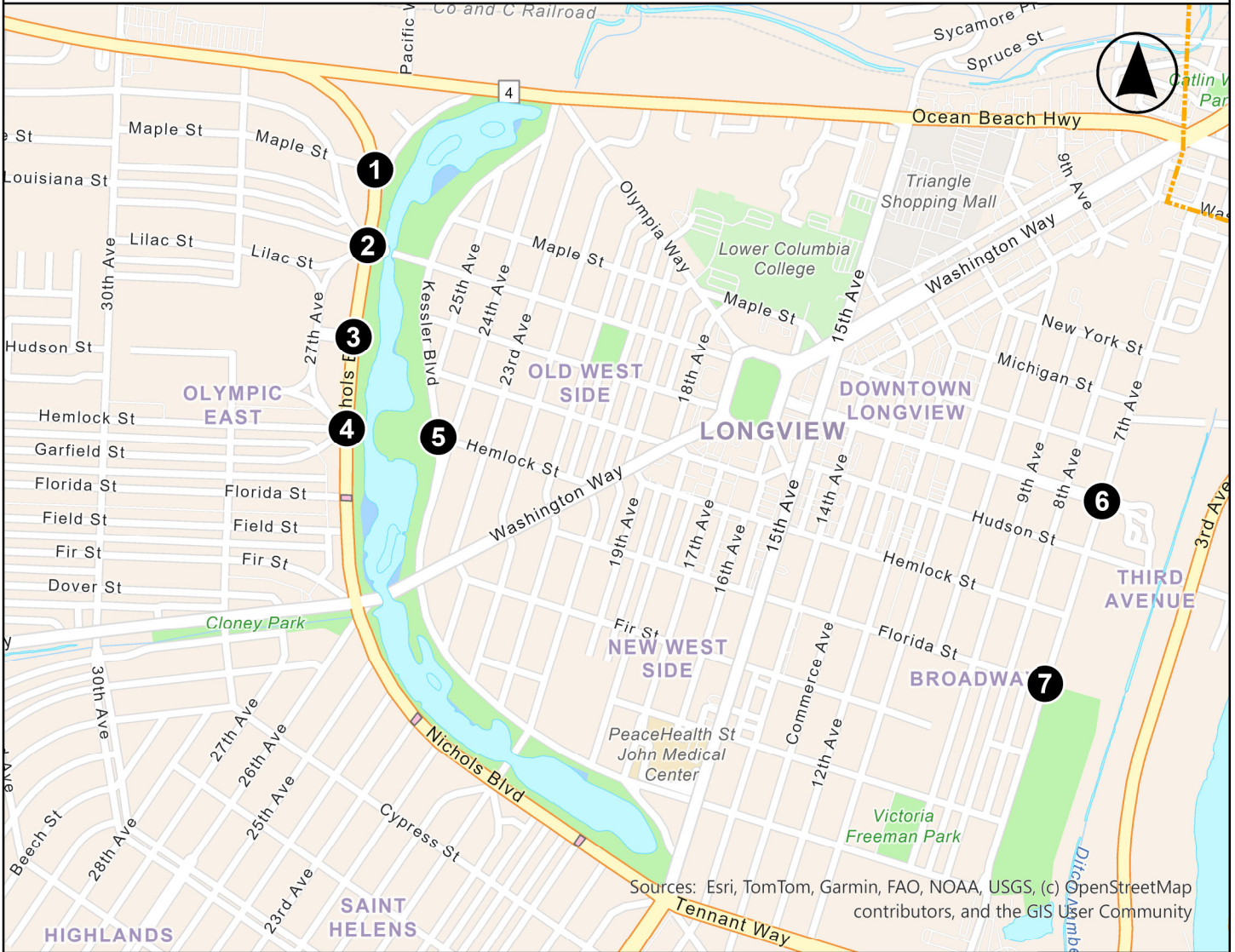
Clark Carroll and Art Birkmeyer both experienced cars doing free right hand turns by using the bike lanes.

8. PUBLIC COMMENTS**9. ADJOURNMENT**

The meeting adjourned at 6:02 pm.

Systemic Pedestrian Crossing Improvement Project

This project aims to improve pedestrian safety at seven locations around Longview. The project proposes a variety of geometry, pavement marking, signage, and signalization improvements to enhance each of these intersections and increase safety for all roadway users.



Sources: Esri, TomTom, Garmin, FAO, NOAA, USGS, (c) OpenStreetMap contributors, and the GIS User Community

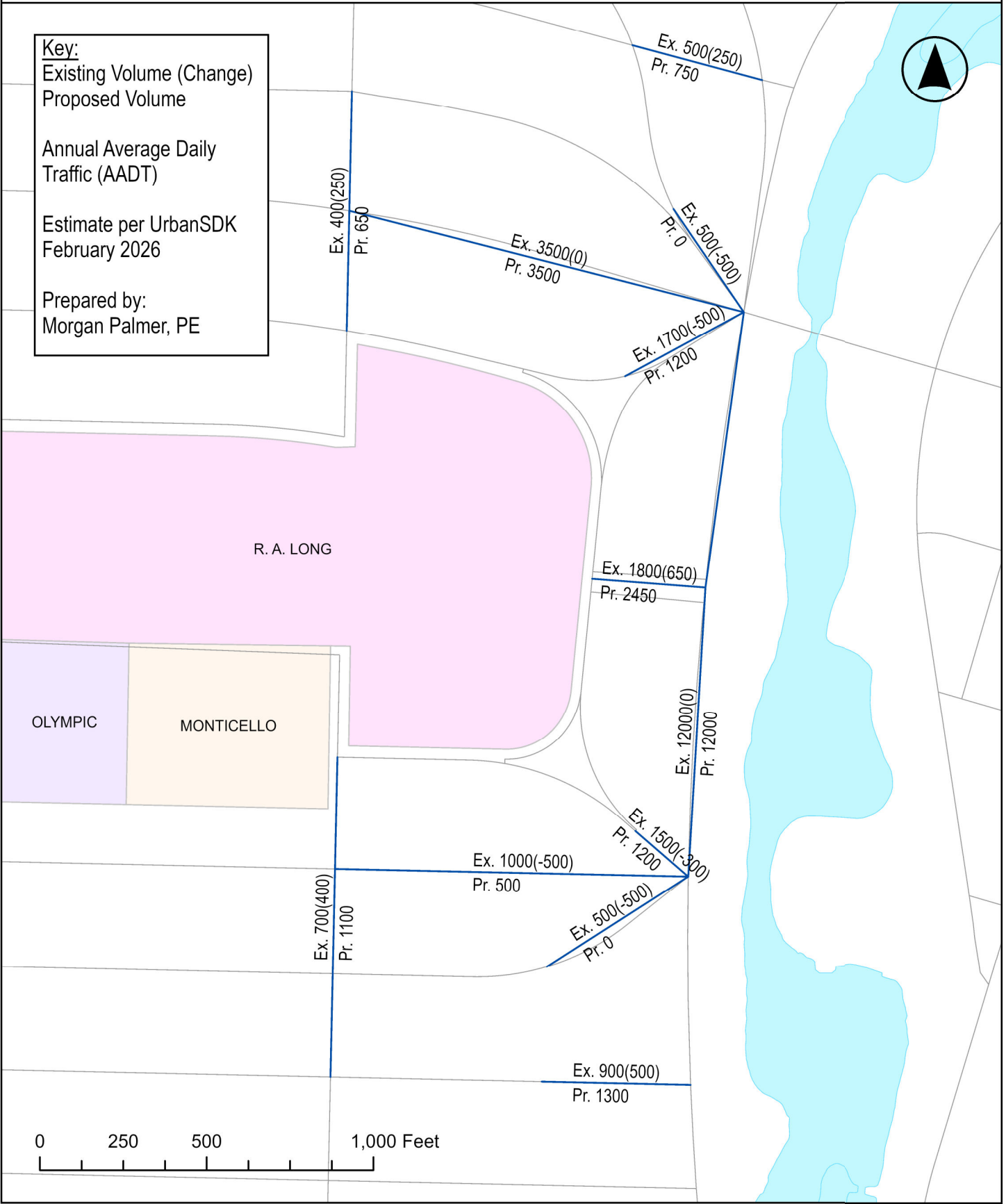
<p>Project Timeline:</p> <p>Design 2026 Construct 2027</p>	<p>Project Funding:</p> <p>100% Federal Grant Highway Safety Improvement Program</p>	<p>Project Team:</p> <p><u>Design</u> City of Longview Engineering Division</p> <p><u>Construction</u> Contractor determined through bidding</p>
---	---	---

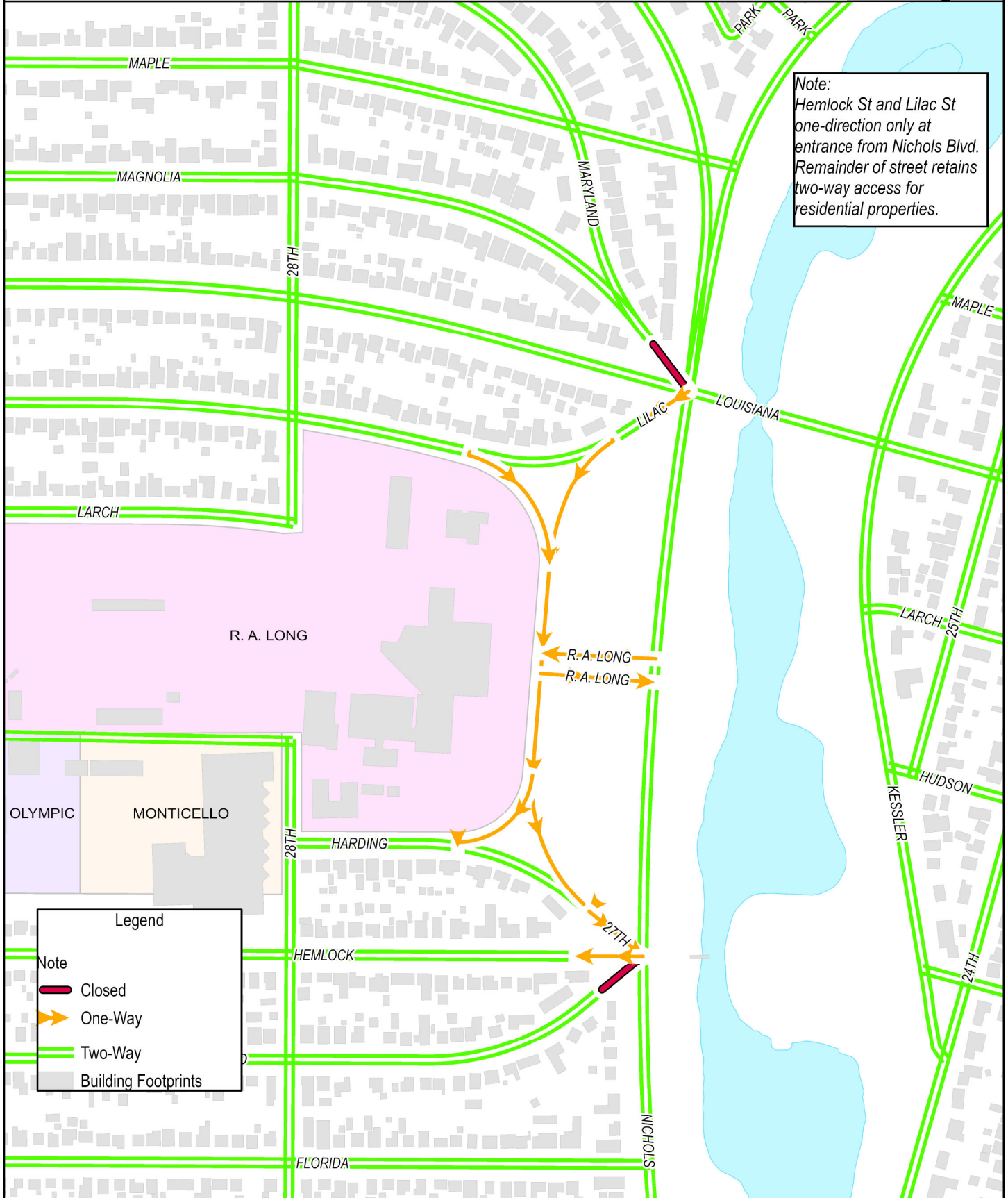
Key:
 Existing Volume (Change)
 Proposed Volume

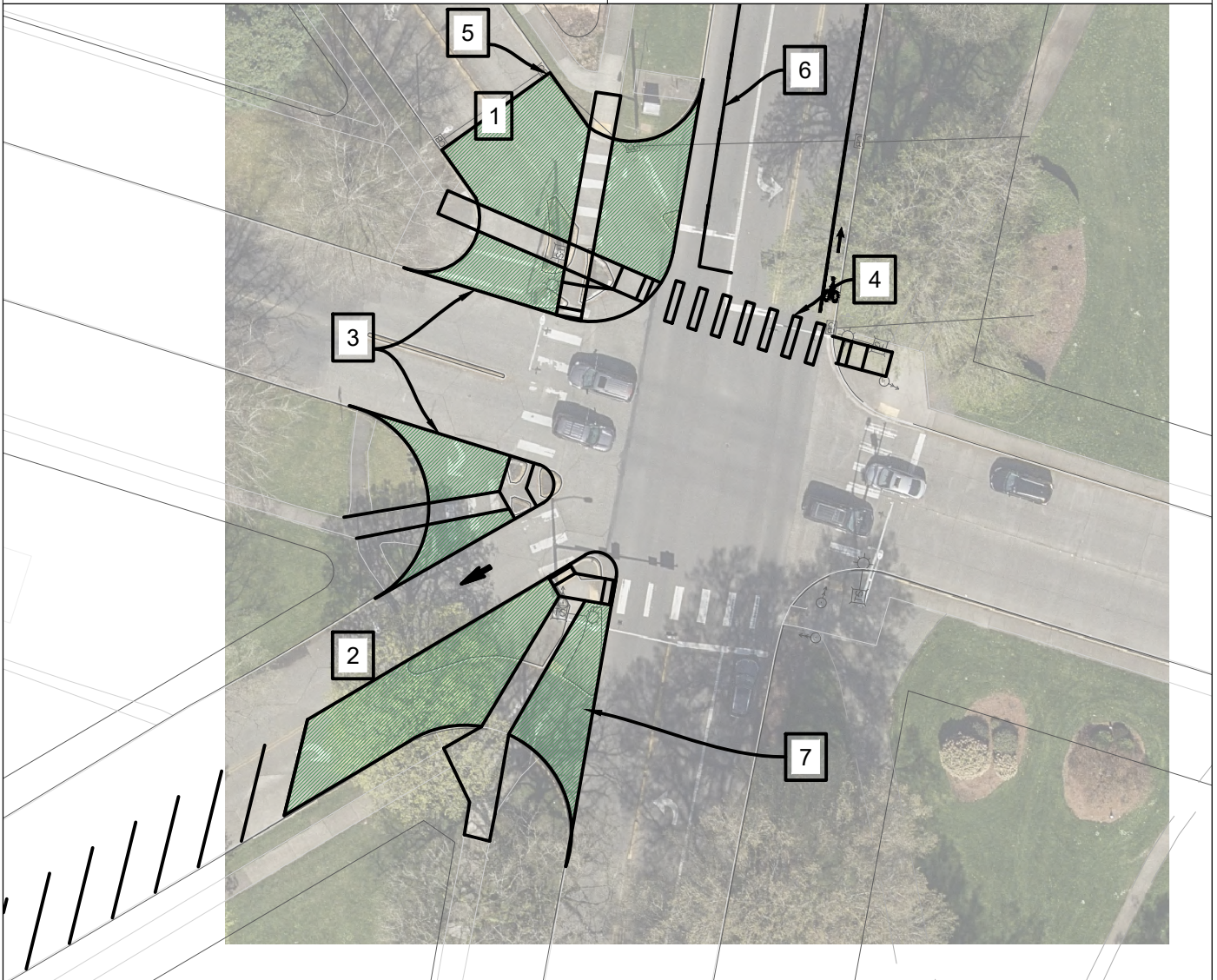
Annual Average Daily
 Traffic (AADT)

Estimate per UrbanSDK
 February 2026

Prepared by:
 Morgan Palmer, PE







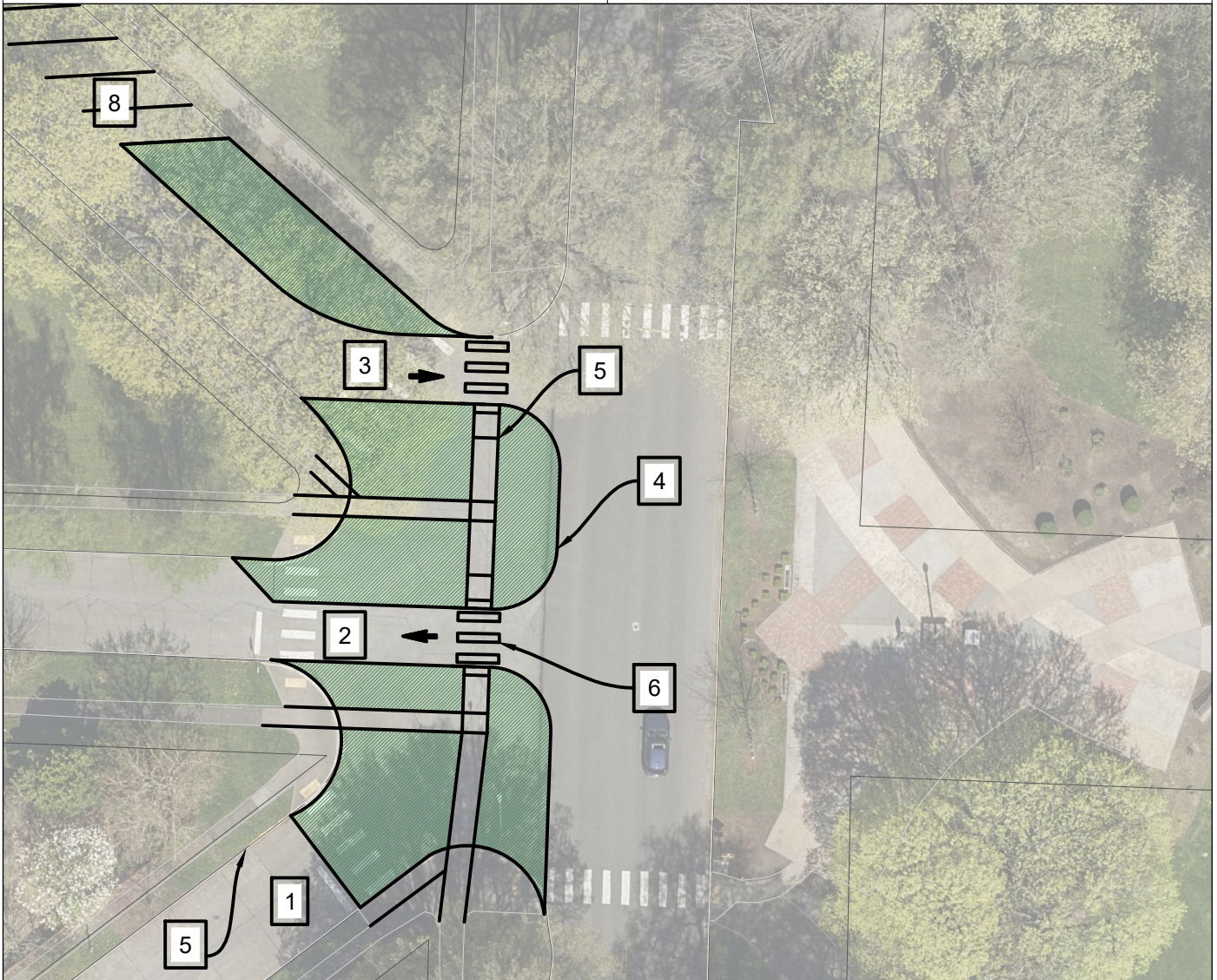
Notes:

1. Close Magnolia access from Nichols/Louisiana. Neighborhood detoured to 28th and Maple.
2. Allow in-bound traffic on Lilac only, to allow buses and school flow to function as normal. Extend diagonal parking.
3. Extend curb to increase safety and comfort of pedestrian islands. Upgrade ADA ramps and move pushbuttons as needed.
4. Add crosswalk north side of Louisiana. Add curb ramp on NE corner.
5. Potential storm impacts, TBD with survey.
6. Extend bike lane and move stop bar SB Nichols.
7. Remove concrete street and restore with landscaping.



THIS IS A
PRELIMINARY
DRAWING

SHEET
1 OF 1



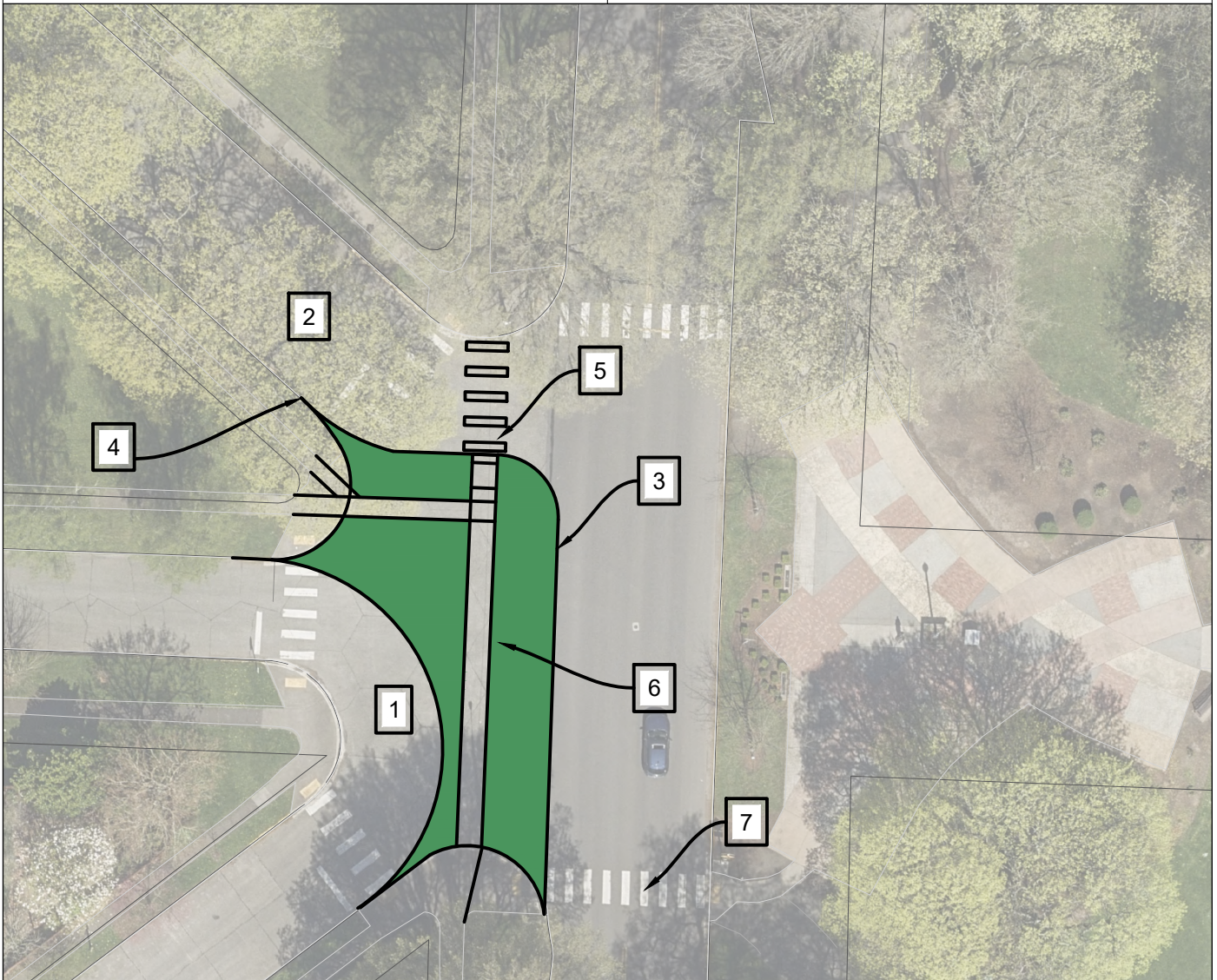
Notes:

1. Close Garfield. Neighborhood traffic access via Hemlock or Florida.
2. Hemlock in only. Curb extension at entrance to prevent exits onto Nichols. Remainder of street is two-way to enable access to homes.
3. Harding OUT only. Enables buses to exit school complex, while eliminating conflicts. Add diagonal parking.
4. Extend curb into intersection to reduce conflicts and direct turning movements. Remove old ADA ramps.
5. Potential Storm impacts, TBD with survey
6. Move crosswalks on shorter crossing distance parallel with Nichols.
7. Extend sidewalk and add ADA ramps for new crossings.
8. Remove concrete street and restore with landscaping.



THIS IS A
PRELIMINARY
DRAWING

SHEET
1 OF 1



Notes:

1. Close Garfield and Hemlock to access from Nichols. Neighborhood traffic access via Harding or Florida. Create turn around for Fire response and neighborhood circulation.
2. Harding In and Out allowed. Correct approach angle so it enters Nichols perpendicular. Extend curb into intersection to reduce conflicts and direct turning movements. Remove old ADA ramps.
3. Potential Storm impacts, TBD with survey
4. Consolidate crossing to one location. 28' curb to curb width.
5. Extend sidewalk and add ADA ramps for new crossings.
6. Remove concrete street and restore with landscaping.
7. Consider closing this crosswalk and consolidating all crossings to north side of intersection.



THIS IS A
PRELIMINARY
DRAWING

SHEET
1 OF 1